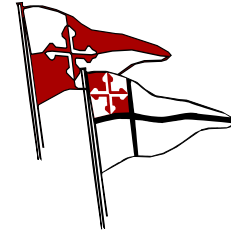


7TH ANNUAL [SCC/GIYS](#) SPRING REGATTA SAILING INSTRUCTIONS

Saturday, May 20, 2017
CBYRA Sanction No 313



The event will be a distance race using marks in CBYRA Regions 2 and 3. The social activities will take place at the GIYS Boathouse following the race.

1 RULES - The regatta will be governed by The Racing Rules of Sailing (RRS). In the event of a conflict between the Notice of Race and the Sailing Instructions, the Sailing Instructions shall govern.

2 NOTICES TO COMPETITORS - Notices to competitors will be posted electronically on the [Official Notice Board](#) at [Yacht Scoring](#).

3 CHANGES TO SAILING INSTRUCTIONS - Any change to the Sailing Instructions or to the Notice of Race will be posted on the [Official Notice Board](#) prior to 0800 on 20 May 2017.

4 SIGNALS ASHORE – No flag signals will be made ashore. Any information after 0800 on 20 May and before Rendezvous at 1030 will be conveyed by VHF 16 & 72 and electronically on the website Official Notice Board.

5 SCHEDULE OF RACES –

5.1 Rendezvous at 1030 near Hacketts Point (GC- 1.)-CBYRA Region 3 Mark A, South of the Bay Bridge.

5.2 A Race committee vessel will display flag “L” accompanied by a sound signal, and proceed to the starting area.

5.3 First warning is at 1055. No starting sequence will commence after 1400 hours.

5.4 The intended starting order will begin with the slowest classes. However, the CHESSS (short handed spin and no spin) may start last.

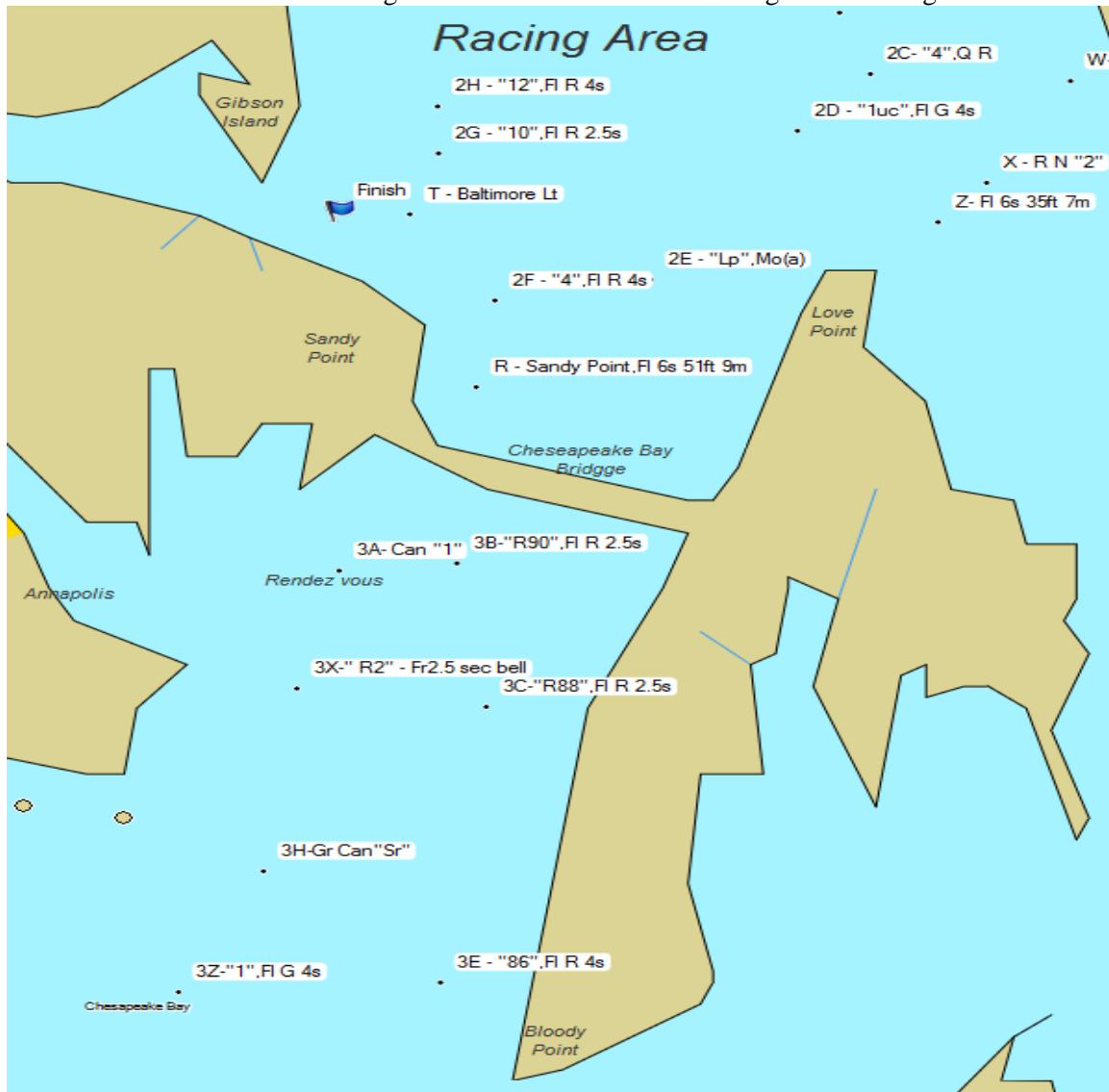
5.5 The intended starting order will be posted as a notice after registration closes and before May 20th.

5.6 A CRCA (Rock Creek) class race will rendezvous at 1000 near Region 2 Mark BB (G “7” Brewerton Channel 39-11.154 N & 76-27.806 W) and be started by the CRCA class.

5.7 A minimum of three boats with valid entries will be required for a class or division to be scored separately. If less than three boats are entered in a class, they will be scored as a part of the handicap division appropriate to their ratings. The position in the starting sequence will be determined by the race committee.

6 Class Flags – are as designated by CBYRA or the CRCA class rules and flown at bow or stern.

7. RACING AREA - The Racing Area will be within CBYRA Region 2 and Region 3.



8 COURSES - A distance race of 10–25NM around CBYRA Regions 2 & 3 marks passing through one of the middle three spans (between the cable anchorages) of the northern Chesapeake Bay Bridge. The course will be announced on VHF 72 and will be designated using placards on the Race Committee Signal Boat at the starting line, showing the Region and the CBYRA letter designations of the marks to be utilized in each Region in order to sail the course. Marks designated in red shall be rounded to port; in green shall be rounded to starboard

8.1 COURSE for CRCA (Rock Creek) will be from the Start at Region 2 Mark BB to the Finish at Region 2 Mark T (Baltimore Light) leaving Region 2 Marks K and J to starboard. If conditions warrant the Start may be moved south to shorten the course. If a committee boat is not present at the finish, take your own GPS time and make note of the boats ahead and behind when the light bares 90 degrees from your course.

9 MARKS - ALL COORDINATES STATED ARE APPROXIMATE. BAY BRIDGE MEANS TRANSIT THROUGH ONE OF THE THREE MIDDLE SPANS OF THE NORTHERN BAY BRIDGE (BETWEEN THE CABLE ANCHORAGES) AS PART OF THE "COURSE TO BE SAILED."

NUMERAL 3 FOLLOWED BY A LETTER DENOTES A MARK IN CBYRA REGION 3.

CBYRA No.	LAT.(N)	LONG.(W)	DESCRIPTION
3A	38-58.192	76-24.861	Hacketts GC "1"
3B	38-58.294	76-23.326	R "90"
3C	38- 56.13	76-22.934	R "88"
3E	38-51.991	76-23.54	R "86"
3H	38-53.648	76-25.88	GR C "SR"
3K	38-45.125	76-26.655	G "83"
3Q	38-47.592	76-24.697	R "84 A"
3X	38-56.513	76-25.495	R "2"
3Z	38-51.839	76-26.973	G "1"
Bay Bridge	38-59.55	76-22.99	Bay Bridge

NUMERAL 2 FOLLOWED BY A LETTER DENOTES A MARK IN CBYRA REGION 2

Bay Bridge	38-59.55	76-22.99	Bay Bridge
2D	39-04.815	76-18.85	G "1 UC"
2E	39-02.58	76-20.761	R/W "LP" MoA
2F	39-02.261	76-22.834	R "4" (Craighill Ch.)
2G	39-04.458	76-23.571	R "10"(Craighill Ch.)
2H	39-05.182	76-23.556	R "12"(Craighill Ch.)

10 THE START –

10.1 The start using RRS 26 will be in the vicinity of Region 3 mark A - Hackett GC "1"

10.2 The intended starting order will be determined and posted after registration ends but before May 20th.

10.3 Competitors should note that the class flags or pennants signifying the starting sequences for the various classes will be displayed from poles located at deck level on the Signal Boat.

10.4 At the discretion of the Race Committee some of the classes listed may be started simultaneously. Competitors should pay careful attention to the class flag signals displayed on the Signal Boat to determine when their class is included in the starting sequence.

10.5 The starting line will be between the staff of an orange flag on the committee boat and the course side of the starting mark.

10.6 The starting area is defined as extending 100 yards beyond each end of the starting line and 150 yards behind the starting line and its extensions. Boats shall keep clear of the starting area and the first leg of the course until its class flag has been hoisted by the committee.

10.7 A committee boat which is either a starting or finishing mark may set a limit mark. A boat shall not touch either the limit mark or the committee boat or pass between them. For purposes of RRS 31.1 (Touching a Mark) and RRS 28.1 (Sailing the Course) the limit mark and the committee boat shall be considered to be a single mark. No other requirements of RRS 31 or 28 are modified by this paragraph.

10.8 After starting one or more classes the Race Committee may decide to change the course for subsequent classes. There will be a break in the sequence, which will be signaled by use of the AP pennant. There may also be a radio communication to the racing fleet to announce same on VHF Channel 72. Failure to transmit or receive such notification will not be grounds for redress.

11 RECALL - The race committee will attempt to notify boats identified as OCS by announcing their racing numbers on VHF 72. Failure to transmit or receive such notification will not be grounds for redress. This changes RRS 62.

12 THE FINISH - The RC finish boat will anchor near Mark T. The finishing line will be between the staff of an orange or yellow flag on a race committee boat and the course side of Region 2 Mark T (Baltimore Light).

13 TIME LIMIT - The time limit is 1630 hours for all classes. All starters who have not finished by 1630 will be scored TLE.

14 PROTESTS AND REQUESTS FOR REDRESS

14.1 RRS 61.1(a) is changed to require: "Notice of intent to protest and the racing number of the protested boat shall be given to the race committee promptly upon finishing by hail acknowledged by the committee. A boat intending to protest but retiring before finishing shall notify the race committee of her intent and the racing number of the protested boat at the first reasonable opportunity. Hails on VHF channel 72 are acceptable.

14.2 Protests shall be given to the Race Official stationed at a desk set up for the purpose at the Awards Party at GIYS, and shall be submitted within three (3) hours of the protesting yacht's finish. Email is not acceptable. In the event of abandonment the protest time limit will be 1 hour after the finish line signal boat docks. Standard protest forms will be available at the GIYS Boat house.

14.3 Protests will be heard starting at 1800 hours on Monday 22 May at Gibson Island.

14.4 Scoring Inquiries may be submitted on line on the [Event Web Site](#)

15 COURTESY BROADCASTS - The race committee will make every effort to keep competitors informed during the course of the race. Competitors are encouraged to monitor channel 72 throughout the race. However, failure to receive such communications will not be grounds for redress. Flag signals will govern.

16 RADIO COMMUNICATIONS – A boat may not make any radio transmissions while racing except on VHF channel 16, 13 or with the race committee on VHF channel 72. While racing, a boat shall not receive ANY communication not available to all boats with the exception of those permitted by RRS 41(d). This restriction includes mobile telephones and internet.

17 SCORING – Unless changed by a later official notice, PHRF handicapping will be done using time on time circular random ratings.

18 DISPOSAL OF REFUSE - A boat shall dispose of all refuse in a proper manner upon returning to shore. Discharging refuse overboard may be grounds for disqualification.

19 SAFETY

19.1 A boat that retires from the race, or leaves the racing area, shall notify the race committee as soon as possible.

19.2 Boats shall meet applicable class safety equipment and standards.

19.3 Boats shall not exercise right of way, cross in close proximity to, or interfere with the reasonable transit of the race area by a freighter, tug or other commercial vessel. Competitors must take corrective action well in advance of any potentially dangerous situation. A boat protested under this rule has the burden of proof that she complied with this rule. RRS 60.3 is changed to add "If the race committee receives a report of an incident where a boat(s) may have interfered with commercial traffic it may protest any boat involved."